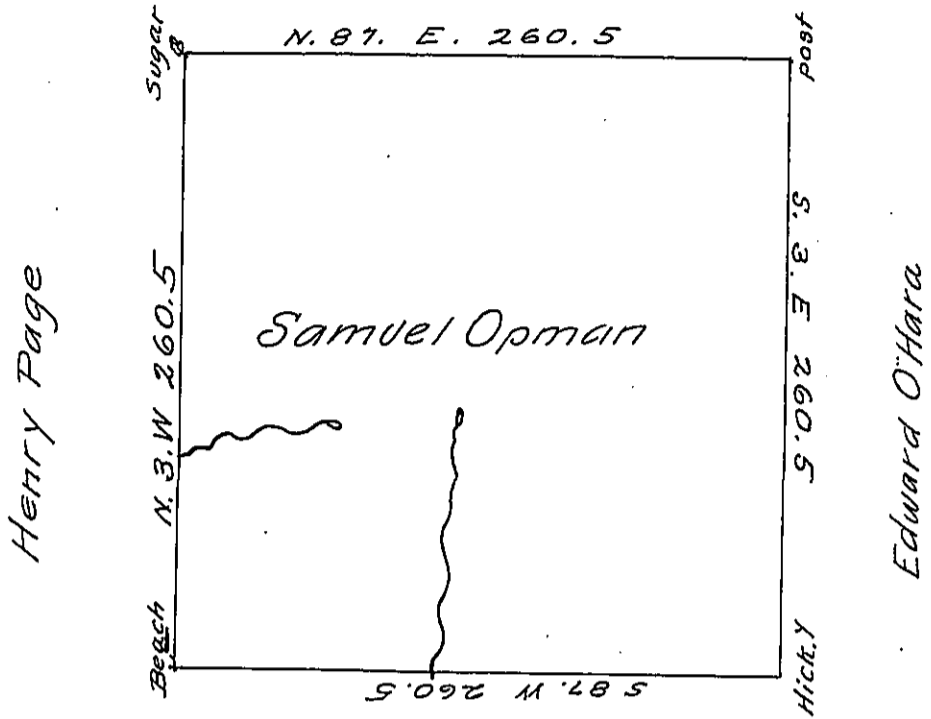


Charles Opman



Philip Opman

Situate on the Waters of Beaver Creek in District N^o 3 Allegany County containing 400^{ac}. 16- and allowance. Survey'd 1 June 1795 in pursuance of a Warrt. granted Samuel Opman 21 Aprl 1794

Ben Stokely D.S.

Dan^l Brodhead Esq. S.G.

In Sandy Lake Town^{sh} Mercer County

IN TESTIMONY that the above is a copy of the original remaining on file in the Department of Internal Affairs of Pennsylvania, made conformably to an Act of Assembly approved the 16th day of February, 1833, I have hereunto set my Hand and caused the Seal of said Department to be affixed at Harrisburg, this twenty-fourth day of May 1906

Joseph D. ...
Secretary of Internal Affairs.